



FOSHAN HANSE INDUSTRIAL CO.,LTD.
E-MAIL:SALE@HANSECERAMICTILE.COM
TEL: 0086-757-82725860 FAX:0086-757-82264948
ADD: NO.5 JIHUA 3RD ROAD, CHANCHENG, FOSHAN



**GLAZED
PORCELAIN PANEL**
HANSE

CATALOG

OLIMPIA



01

23



LONDON

MARMO MAX PLUS



29

35



LOFT

CEMENT



43

53



CARVED

PURE COLOR PABLE



59

65



BIG

STONE COLOR LUXURY



75

79



ENGINEERING CASE AND
CONSTRUCTION TECHNOLOGY



Application: 1QGBY18923



OLIMPIA

It is pure and virginal white. It's elegance of junoesque grey is clean and clear. Gold silk inside makes it modest luxury. The color and surface is soft and warm, looks like a natural landscape painting, bring you a high quality living experience.



Lying in the bathtub, the warm water washes your skin smoothly. A book in hand, all successful views are in your mind.



Sharing happiness with families,
friends in the kitchen
Not only the food,
but also the atmosphere,
will create the joy
every day, every parties.

Water flows from the wall, cleans everything. It knows, it understands, it keeps waiting for it. They are friends, they are partners, they work together to make your world clear and bright.



Application: 1QGBY18923



1QGBY18923(Glossy)	900X1800X5.5mm / 36"X 72"
1CGBY18923(Matt)	900X1800X5.5mm / 36"X 72"
1QGBY18923-80(Glossy)	900X1800X8.0mm / 36"X 72"
1CGBY18923-80(Matt)	900X1800X8.0mm / 36"X 72"
1QGBY126103(Glossy)	600X1200X5.5mm / 24"X 48"
1CGBY126103(Matt)	600X1200X5.5mm / 24"X 48"
1QGBY126103-75(Glossy)	600X1200X7.5mm / 24"X 48"
1CGBY126103-75(Matt)	600X1200X7.5mm / 24"X 48"

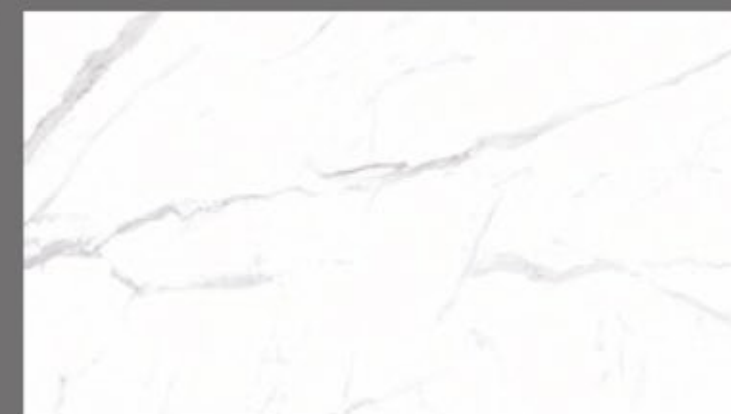
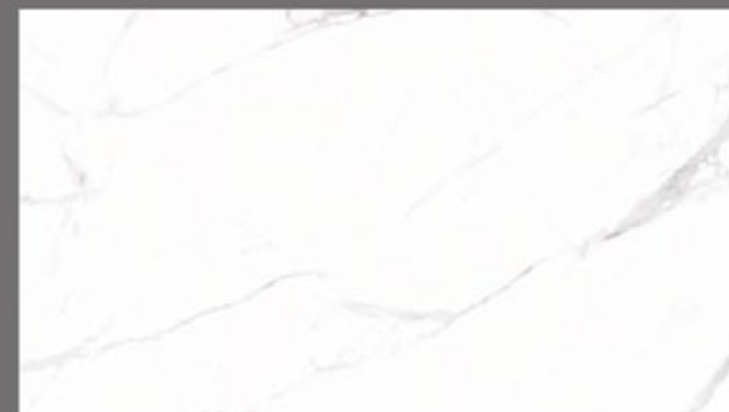


Quiet,Clean,Clear,Bright
and
Simple,Life should be like this





Application: BG126Q01-75



BG189Q01(Glossy)	900X1800X5.5mm / 36"X 72"
BG189C01(Matt)	900X1800X5.5mm / 36"X 72"
BG189R01(Smooth)	900X1800X5.5mm / 36"X 72"
BG189Q01-80(Glossy)	900X1800X8.0mm / 36"X 72"
BG126Q01(Glossy)	600X1200X5.5mm / 24"X 48"
BG126C01(Matt)	600X1200X5.5mm / 24"X 48"
BG126R01(Smooth)	600X1200X5.5mm / 24"X 48"
BG126Q01-75(Glossy)	600X1200X7.5mm / 24"X 48"



The wall, glass, ceiling, nothing can prevent you from chasing the sunlight and fresh air. Sun rise and sun set go with you everyday, helping you to achieve the goal of life.

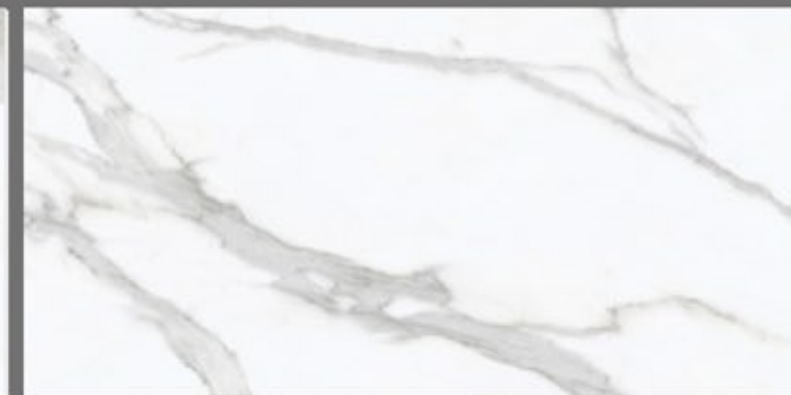




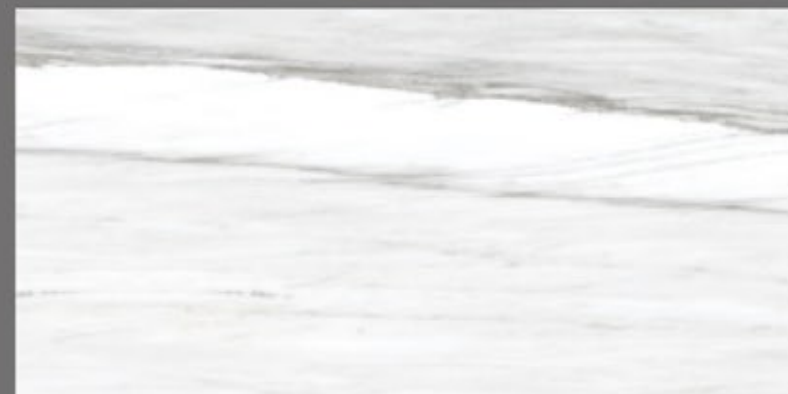
Application: BG189Q25-80



BG189Q25-80A(Glossy) 900X1800X8.0mm / 36"X 72"



BG189Q25-80B(Glossy) 900X1800X8.0mm / 36"X 72"



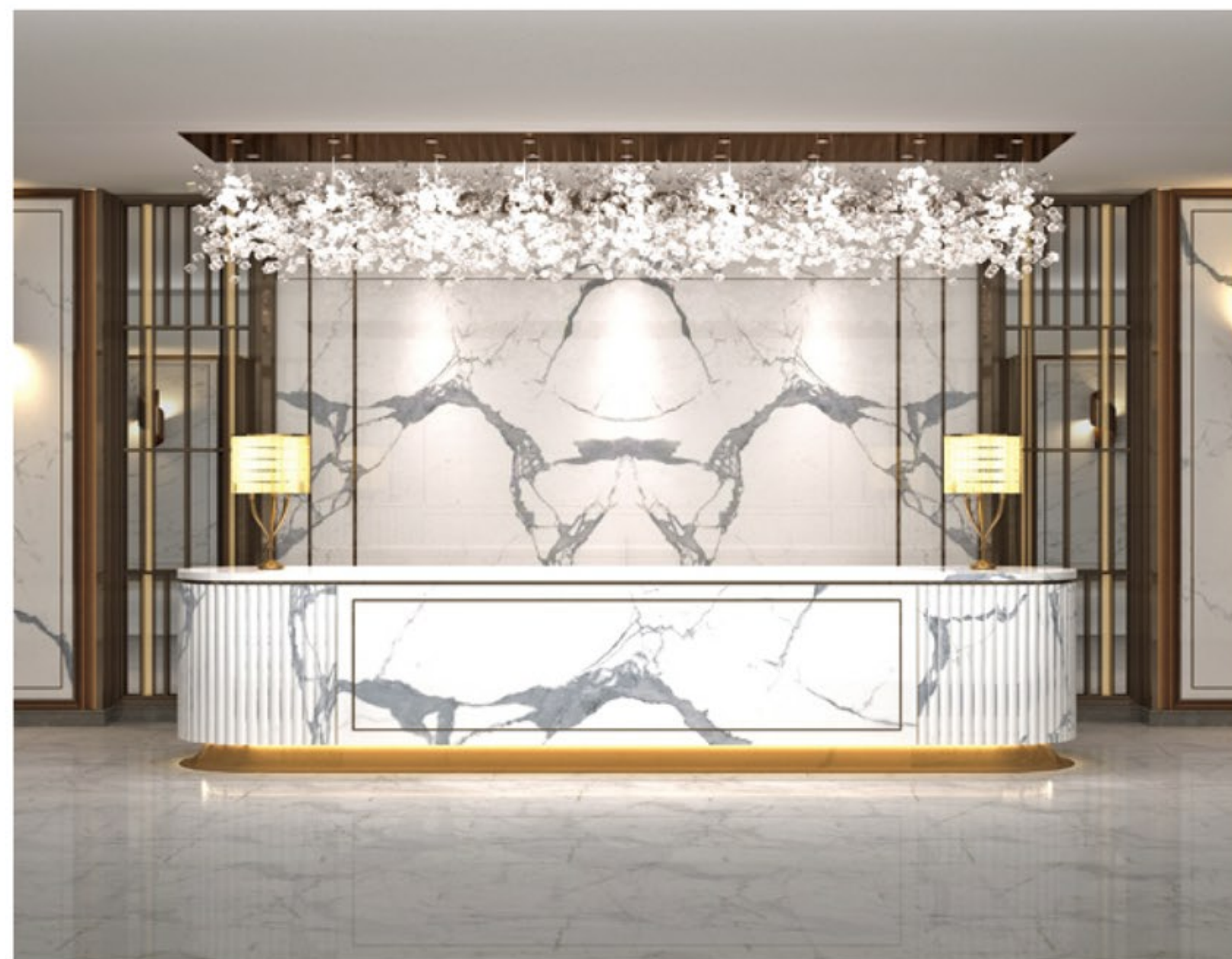
BG189Q25-80C(Glossy) 900X1800X8.0mm / 36"X 72"



BG189Q25-80D(Glossy) 900X1800X8.0mm / 36"X 72"



Application:BJ18923



Application:BJ18952-80



Application: 2BG189F05L



LONDON

Everyday, so many peoples come and go.

I am still there

I do not feel lonely

I feel happy

As I find everyone leaving me with full face of pleasure

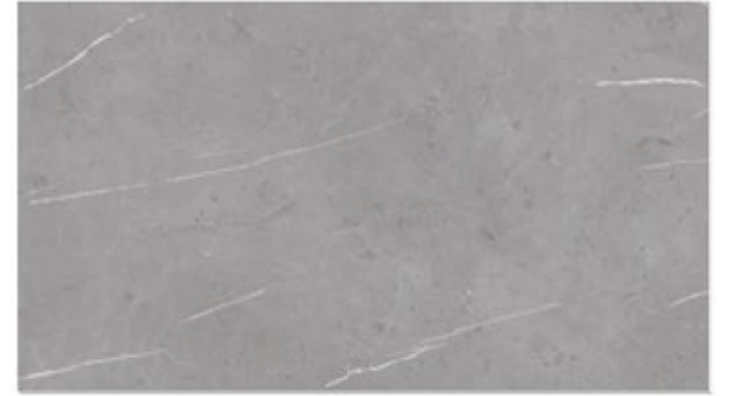




Application: BG189Q58-80



BG126Q02(Glossy) 600X1200X5.5mm/24"X48"
BG126C02(Matt) 600X1200X5.5mm/24"X48"
BG126R02(Smooth) 600X1200X5.5mm/24"X48"
BG189Q02(Glossy) 900X1800X5.5mm/36"X72"
BG189C02(Matt) 900X1800X5.5mm/36"X72"
BG189R02(Smooth) 900X1800X5.5mm/36"X72"



BG126Q03(Glossy) 600X1200X5.5mm/24"X48"
BG126C03(Matt) 600X1200X5.5mm/24"X48"
BG126R03(Smooth) 600X1200X5.5mm/24"X48"
BG189Q03(Glossy) 900X1800X5.5mm/36"X72"
BG189C03(Matt) 900X1800X5.5mm/36"X72"
BG189R03(Smooth) 900X1800X5.5mm/36"X72"



BG126Q04(Glossy) 600X1200X5.5mm/24"X48"
BG126C04(Matt) 600X1200X5.5mm/24"X48"
BG126R04(Smooth) 600X1200X5.5mm/24"X48"
BG189Q04(Glossy) 900X1800X5.5mm/36"X72"
BG189C04(Matt) 900X1800X5.5mm/36"X72"
BG189R04(Smooth) 900X1800X5.5mm/36"X72"



2BG189F05L(Matt) 900X1800X5.5mm/36"X72"



BG189Q57-80(Glossy) 900X1800X8.0mm/36"X72"



3BG189Q58-80(Glossy) 900X1800X8.0mm/36"X72"



MARMO MAX PLUS

Application: BG189Q56-80







Application: BG189Q54-80



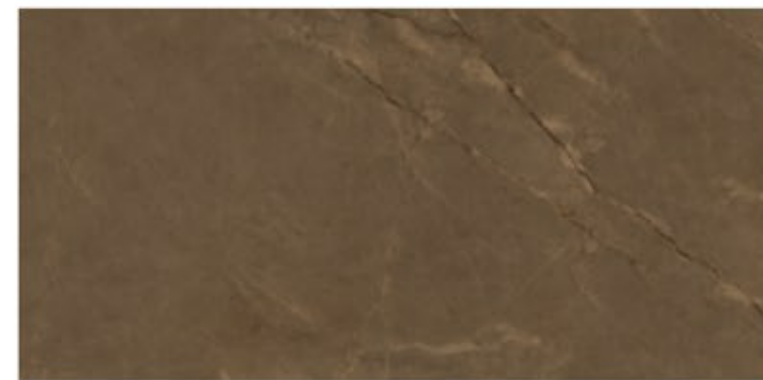
BG189Q53-80(Glossy) 900X1800X8.0mm/36"X72"



BG189Q54-80(Glossy) 900X1800X8.0mm/36"X72"



BG189Q55-80(Glossy) 900X1800X8.0mm/36"X72"



BG189Q56-80(Glossy) 900X1800X8.0mm/36"X72"



Application: 2BG189F20M80



LOFT

I do not have smooth skin, but I protect you from falling down.

This is my natural character.

I don't want to change.

This is me.

Your safe, your health are my first consideration.

Solicitude is not the only character I have, natural, elegant appearance is also the one.

Rains and sunshine
They are not opposite of you
They your friends
because of me



Wake up in the morning
Look out over the sea and the blue sky
You can see your thought is flying freely
Where you dream is
I will be there

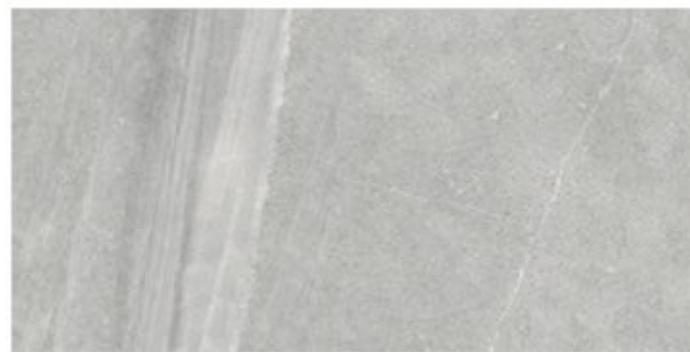




2BG126F09M75(Matt) 600X1200X7.5mm/24"X48"
2BG189F18M80(Matt) 900X1800X8.0mm/36"X72"



2BG126F20M75(Matt) 600X1200X7.5mm/24"X48"



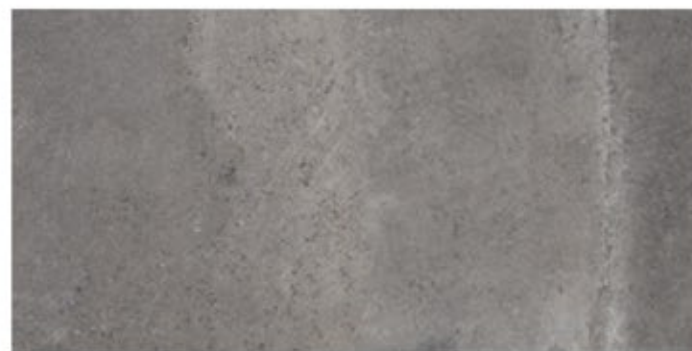
2BG126F13M75(Matt) 600X1200X7.5mm/24"X48"
2BG189F19M80(Matt) 900X1800X8.0mm/36"X72"



2BG126F21M75(Matt) 600X1200X7.5mm/24"X48"



2BG189F20M80(Matt) 900X1800X7.5mm/24"X48"



2BG126F22M75(Matt) 600X1200X7.5mm/24"X48"



Application: 2BG189F50M80J



CEMENT

Nothing can remove the marks of the past.

The lost ages left an enduring impress upon my life

No matter how old you are

I, always hold your hand, walk together with you
to the end









Application: BG189F12-80



2BG189F11-80(Matt) 900X1800X8.0mm/36"X72"



BG189F10-8.0(Matt) 900X1800X8.0mm/36"X72"



1PGBY12609FM(Matt) 600X1200X5.5mm/24"X48"
2BG126F32M75(Matt) 600X1200X12mm/24"X48"
1NG12644-P(Matt) 600X1200X12mm/24"X48"
2BG189F35M80(Matt) 900X1800X8.0mm/36"X72"



2BG189F50M80J(Matt) 600X1200X5.5mm/24"X48"



1PGBY12610FM(Matt) 600X1200X5.5mm/24"X48"
2BG126F10M75(Matt) 600X1200X12mm/24"X48"
1NG12645-P(Matt) 600X1200X12mm/24"X48"
2BG189F36M80(Matt) 900X1800X8.0mm/36"X72"



2BG189F51M80J(Matt) 600X1200X5.5mm/24"X48"



1PGBY12611FM(Matt) 600X1200X5.5mm/24"X48"
2BG126F11M75(Matt) 600X1200X12mm/24"X48"
1NG12646-P(Matt) 600X1200X12mm/24"X48"
2BG189F37M80(Matt) 900X1800X8.0mm/36"X72"



2BG189F52M80J(Matt) 600X1200X5.5mm/24"X48"



2PGBY12612FM(Matt) 600X1200X5.5mm/24"X48"
2BG126F12M75(Matt) 600X1200X12mm/24"X48"
1NG12647-P(Matt) 600X1200X12mm/24"X48"
2BG189F38M80(Matt) 900X1800X8.0mm/36"X72"



Application: 3BG126F04-75



CARVED

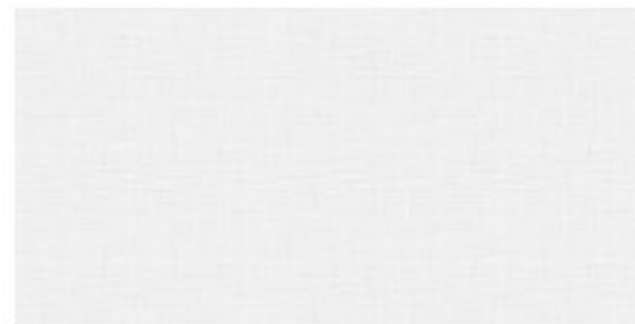




3BG126F01-75(Matt) 600x1200X7.5mm/ 48"X 24"
2BG189F41-80(Matt) 900x1800X8.0mm/ 36"X 72"



3BG126F02-75(Matt) 600x1200X7.5mm/ 48"X 24"
2BG189F42-80(Matt) 900x1800X8.0mm/ 36"X 72"



3BG126F03-75(Matt) 600x1200X7.5mm/ 48"X 24"
2BG189F43-80(Matt) 900x1800X8.0mm/ 36"X 72"



3BG126F06-75(Matt) 600x1200X7.5mm/ 48"X 24"
2BG189F46-80(Matt) 900x1800X8.0mm/ 36"X 72"



3BG126F04-75(Matt) 600x1200X7.5mm/ 48"X 24"
2BG189F44-80(Matt) 900x1800X8.0mm/ 36"X 72"



3BG126F07-75(Matt) 600x1200X7.5mm/ 48"X 24"
2BG189F47-80(Matt) 900x1800X8.0mm/ 36"X 72"



3BG126F05-75(Matt) 600x1200X7.5mm/ 48"X 24"
2BG189F45-80(Matt) 900x1800X8.0mm/ 36"X 72"



3BG126F08-75(Matt) 600x1200X7.5mm/ 48"X 24"
2BG189F48-80(Matt) 900x1800X8.0mm/ 36"X 72"



PURE COLOR FABLE

WORSHIP OF BLACK AND WHITE FABLE OF MODERN FASHION

"Black and white and other colors are a kind of fable. We choose black and white, because black and white can make us see the potential world."

NEW ZhongYuan chooses youthful white, black and transitional colors between them to position the EP Thin Plate series of pure color so as to pursue a pure and artistic modern space of high quality and to meet fashionable and concise taste, hobby and lifestyle of modern urbanites

Application: 2QGBY12662



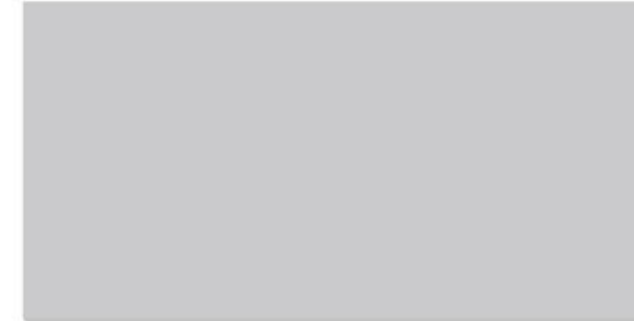




Application: 3QGBY12663



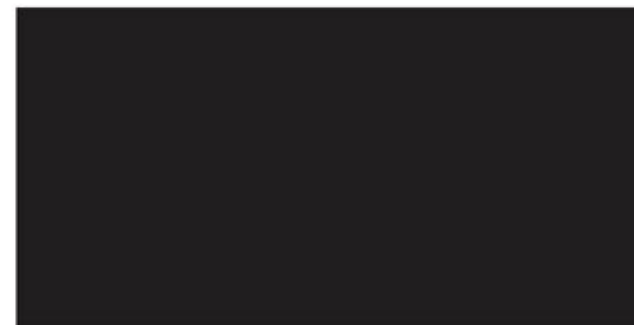
2QGBY12660(Glossy) 600X1200X5.5mm/24"X48"
2CGBY12660(Matt) 600X1200X5.5mm/24"X48"
1QGBY18922(Glossy) 600X1200X12mm/24"X48"
1CGBY18922(Matt) 900X1800X8.0mm/36"X72"
1QGBY18922-80(Glossy) 900X1800X8.0mm/36"X72"
1CGBY18922-80(Matt) 900X1800X8.0mm/36"X72"



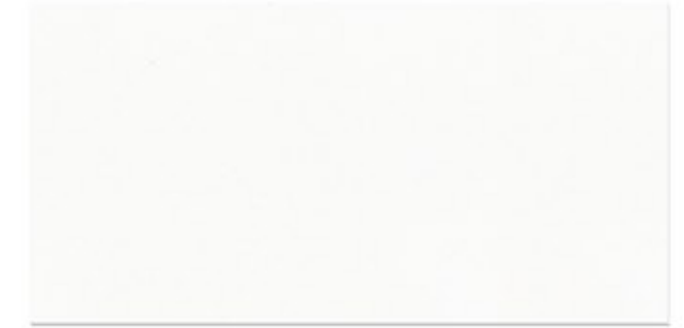
2QGBY12661(Glossy) 600X1200X5.5mm/24"X48"
2CGBY12661(Matt) 600X1200X5.5mm/24"X48"



2QGBY12662(Glossy) 600X1200X5.5mm/24"X48"
2CGBY12662(Matt) 600X1200X5.5mm/24"X48"



3QGBY12663(Glossy) 600X1200X5.5mm/24"X48"



TGBY12601(Full-body) 600X1200X5.5mm/24"X48"
TGBY18901(Full-body) 900X1800X5.5mm/36"X72"



TGBY12603(Full-body) 600X1200X5.5mm/24"X48"
TGBY18903(Full-body) 900X1800X5.5mm/36"X72"



TGBY12604(Full-body) 600X1200X5.5mm/24"X48"
TGBY18904(Full-body) 900X1800X5.5mm/36"X72"



1QGBY18919(Glossy) 900X1800X5.5mm/36"X72"



Application: BG189F06



BIG+

Visual effect of flying like silk sliding your skin, full loads the space with natural felling. Independence and cool nerve concrete building, or rugged marks of grey, will be given a fairly random opinion by the trend again, deduce free attitude of surpassing time. The veins and patterns bloom gloriously like beautiful flowers. Exaggerated abstract expressionism and imagination flourished bring the sense of beauty to every moment of your life.



Application: BG189Q09-80



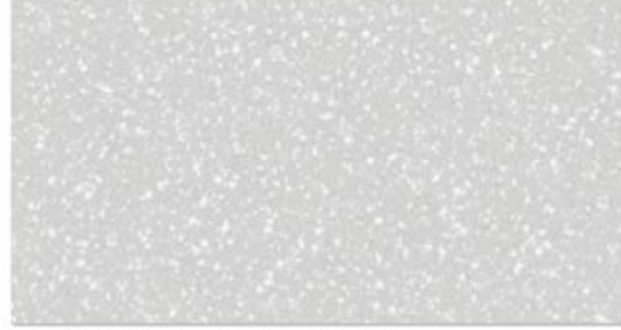




BG126R04-75(Smooth) 600X1200X7.5mm/24"X48"



BG189F07(Matt) 900X1800X5.5mm/36"X72"



BG189F33-80(Matt) 900X1800X5.5mm/36"X72"



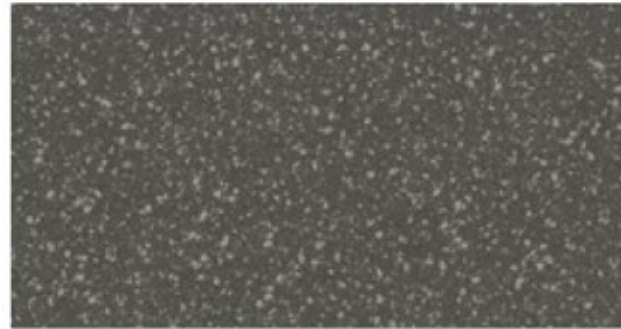
BG189Q13(Glossy) 900X1800X5.5mm/36"X72"



BG126R26-75J(Smooth) 600X1200X7.5mm/24"X48"



BG189F06(Matt) 900X1800X5.5mm/36"X72"



2BG189F34-80(Matt) 900X1800X5.5mm/36"X72"



BG189Q12(Glossy) 900X1800X5.5mm/36"X72"



BG126R27-75J(Smooth) 600X1200X7.5mm/24"X48"



BG189R09-80(Smooth) 900X1800X8.0mm/36"X72"



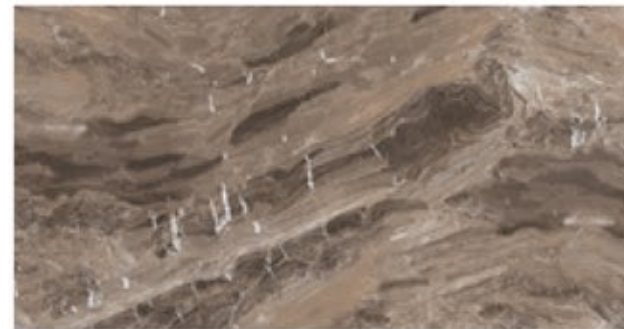
2BG189F16L(Matt) 900X1800X5.5mm/36"X72"



BG189Q09-80(Glossy) 900X1800X5.5mm/36"X72"



2BG126R29-75(Smooth) 600X1200X7.5mm/24"X48"



2BG189R08-80(Smooth) 900X1800X5.5mm/36"X72"



2BG189F17L(Matt) 900X1800X5.5mm/36"X72"



BG189Q11-80(Glossy) 900X1800X8.0mm/36"X72"



STONE COLOR LUXURY

Deriving from selected famous marble

New Zhongyuan Ceramics EP laminatic porcelain panelX selects the famous marble as the raw material and the true stone restores the transparent character, fine and smooth texture and noble temperament and creates elegance and talent stone series integrating luxury, Fashion, individuality and modernization together. Famous stone is created by the nature with excellent quality, rich and powerful family deposits and elegance and talent!

Application: 1QGBY12624





1QGBY12606(Glossy) 600X1200X5.5mm/24"X48"



1QGBY12607(Glossy) 600X1200X5.5mm/24"X48"



1QGBY12608(Glossy) 600X1200X5.5mm/24"X48"



1QGBY12609(Glossy) 600X1200X5.5mm/24"X48"



1QGBY12624(Glossy) 600X1200X5.5mm/24"X48"



1QGBY12625(Glossy) 600X1200X5.5mm/24"X48"



1QGBY12639(Glossy) 600X1200X5.5mm/24"X48"



1QGBY12673(Glossy) 600X1200X5.5mm/24"X48"



1QGBY12674(Glossy) 600X1200X5.5mm/24"X48"



1QGBY126112(Glossy) 600X1200X5.5mm/24"X48"



1QGBY126115(Glossy) 600X1200X5.5mm/24"X48"



1QGBY126117(Glossy) 600X1200X5.5mm/24"X48"



1QGBY18905(Glossy) 900X1800X5.5mm/36"X72"



1QGBY18911(Glossy) 900X1800X5.5mm/36"X72"



1QGBY18915(Glossy) 900X1800X5.5mm/36"X72"
1QGBY18915-80(Glossy) 900X1800X8.0mm/36"X72"



1QGBY18916(Glossy) 900X1800X5.5mm/36"X72"



1QGBY18917(Glossy) 900X1800X5.5mm/36"X72"



1QGBY18918(Glossy) 900X1800X5.5mm/36"X72"



1QGBY18921(Glossy) 900X1800X5.5mm/36"X72"



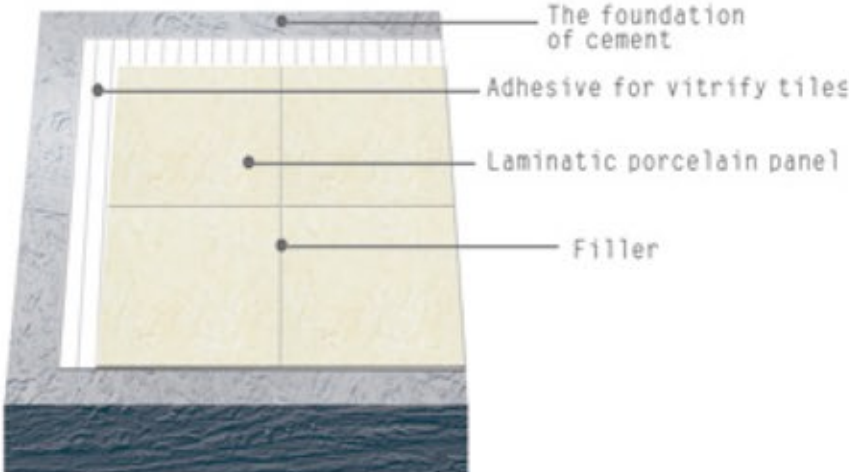
1QGBY18937(Glossy) 900X1800X5.5mm/36"X72"

ENGINEERING CASE

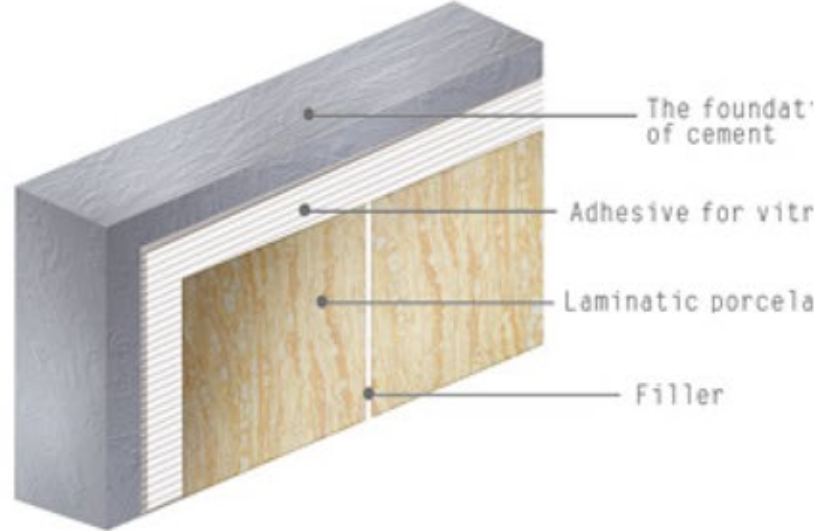


NEW ZHONGYUAN CERAMICS EP LAMINATIC PORCELAIN PANEL CONSTRUCTION SYSTEM

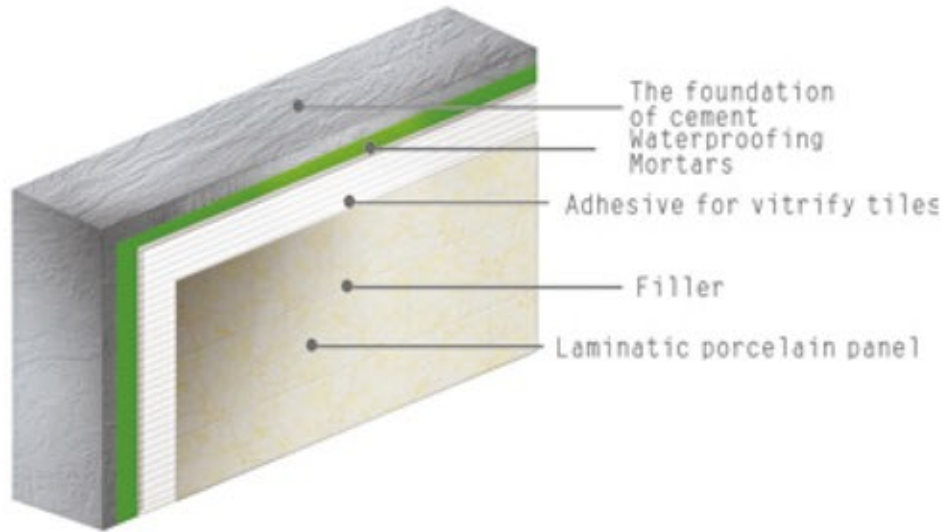
Floor Installation Procedure

view	
Step One	You shall level the cement basic wall and the leveling shall be in 3mm.
Step Two	You shall stick the tapestry brick with adhesive.
Step Three	You shall do the joint filling processing.
General Description of Construction	<p>1. The foundation of cement needs to be level and the errors between the vertical face verticality and surface smoothness both need to be ≤ 4mm;</p> <p>2. Sticking Construction: You shall stir it in accordance with configuration proportion between water and dry powder 1:4 and make it stand for 15min, then do the second stirring, after that you can use it. You shall operate with combined method and stick the sheet with binder to the appropriate place in line with the requirements. The sticking thickness is 5-8mm;</p> <p>3. Joint Filling Construction: You shall do the joint filling construction 24 hours later after the sticking and use the rubber joint filling spatula to press the joint mixture into the facing crevice in 45°angle. You shall stir it frequently to achieve the maximum operability. After the initial set and drying, you shall clean the tile face with soaked clean sponge.</p>

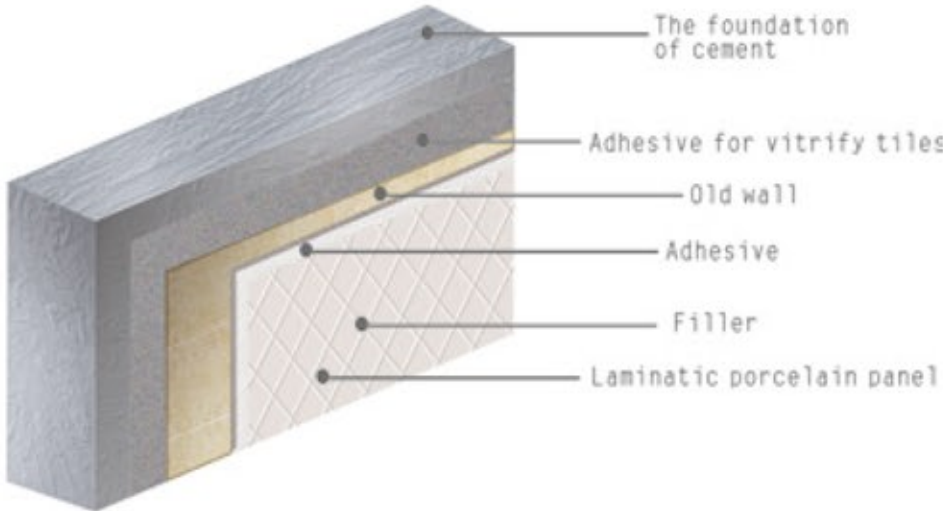
Installation Procedure of Outer Wall

view	
Step One	You shall level the cement basic wall and the leveling shall be in 3mm
Step Two	You shall stick the tapestry brick with adhesive.
Step Three	You shall do the joint filling processing.
General Description of Construction	<p>1. The foundation of cement needs to be level and the errors between the vertical face verticality and surface smoothness both need to be ≤ 4mm;</p> <p>2. Sticking Construction: You shall stir it in accordance with configuration proportion between water and dry powder 1:4 and make it stand for 15min, then do the second stirring, after that you can use it. You shall operate with combined method and stick the sheet with binder to the appropriate place in line with the requirements. The sticking thickness is 5-8mm;</p> <p>3. Joint Filling Construction: You shall do the joint filling construction 24 hours later after the sticking and use the rubber joint filling spatula to press the joint mixture into the facing crevice in 45°angle. You shall stir it frequently to achieve the maximum operability. After the initial set and drying, you shall clean the tile face with soaked clean sponge.</p>

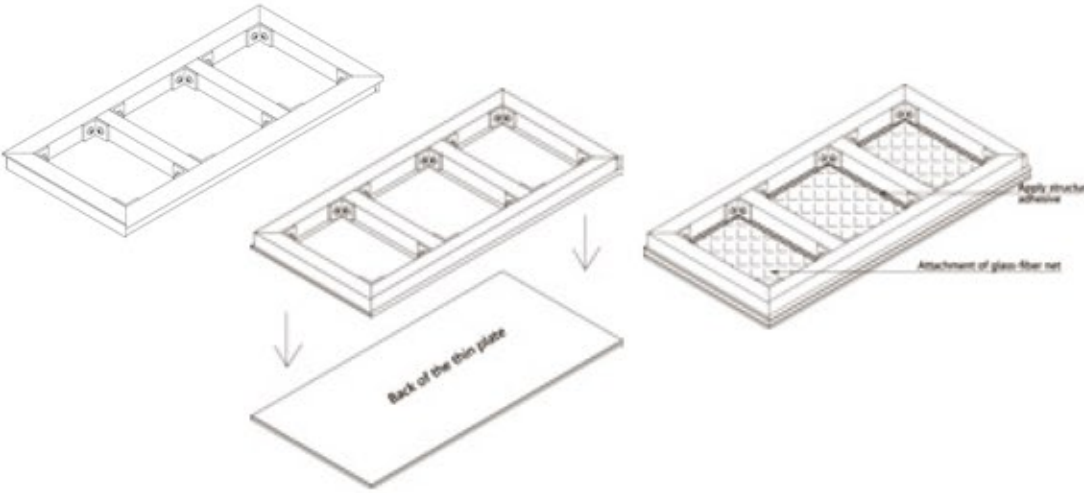
Interior Wall Installation Procedure

view	
Step One	You shall do the base treatment leveling
Step Two	You shall paint waterproof material.
Step Three	You shall use adhesive to stick the tapestry brick.
Step Four	You shall do the joint filling process.
General Description of Construction	<p>1. The foundation of cement needs to be level and the errors between the vertical face verticality and surface smoothness both need to be $\leq 4\text{mm}$;</p> <p>2. Waterproof Construction: You shall stir and paint it in accordance with the packing instruction. After the first drying of the surface (4-8 hours) you shall do the second painting (form the cross Construction with the first construction) and the thickness of each time shall be about 0.5mm;</p> <p>3. Sticking Construction: You shall stir it in accordance with configuration proportion between water and dry powder 1: 4 and make it stand for 15min, then do the second stirring, after that, you can use it. You shall operate with combined method and stick the sheet with binder to the appropriate place in line with the requirements. The sticking thickness is 5-8mm;</p> <p>4. Joint Filling Construction: You shall do the joint filling construction 24 hours later after the sticking and use the rubber joint filling spatula to press the joint mixture into the facing crevice in 45°angle. You shall stir it frequently to achieve the maximum operability. After the initial set and drying, you shall clean the tile face with soaked clean sponge.</p>

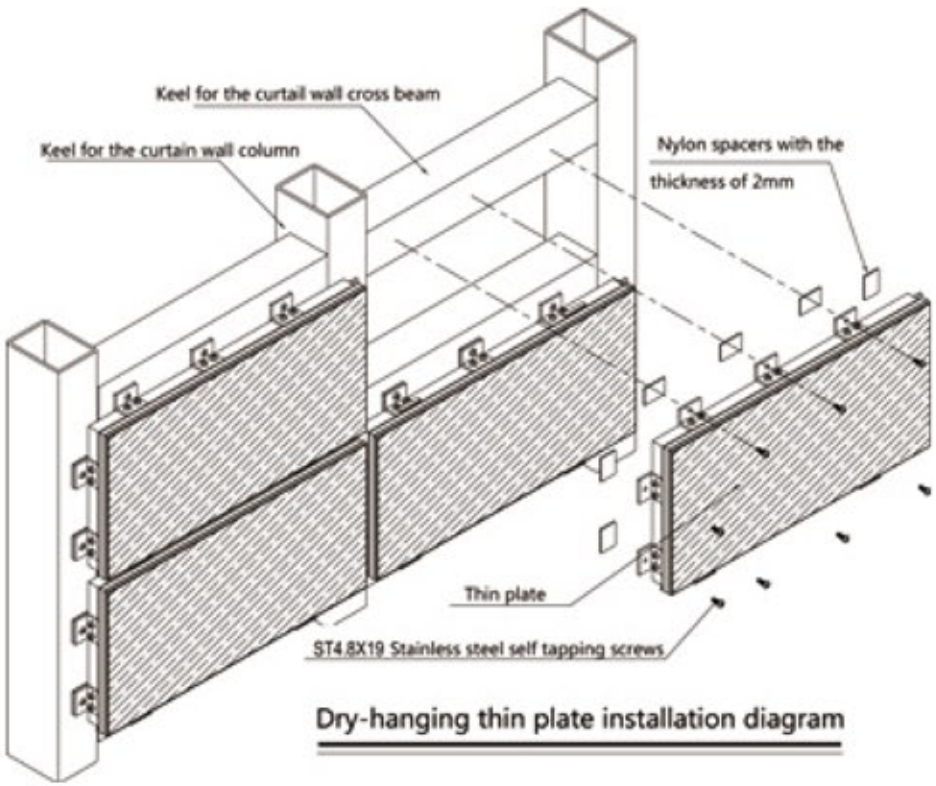
Old Tile Transformation Installation Procedure

view	
Step One	You shall check the bonding strength of old tile foundation and do the drawing test when it is necessary;
Step Two	You shall do the roughening treatment to the face of old tile and the roughening treatment area shall reach over 80%.
Step Three	You shall use ceramic tile adhesive to stick the tapestry brick
Step Four	You shall do the joint filling process;
General Description of Construction	<p>1. The foundation of cement needs to be level and the errors between the vertical face verticality and surface smoothness both need to be $\leq 4\text{mm}$;</p> <p>2. The surface roughening treatment area of old wall shall be over 80%;</p> <p>3. Sticking Construction: You shall stir it in accordance with configuration proportion between water and dry powder 1: 4 and make it stand for 15min then do the second stirring, after that, you can use it. You shall operate with combined method and stick the sheet with binder to the appropriate place in line with the requirements. The sticking thickness is 5-8mm;</p> <p>4. Joint Filling Construction: You shall do the joint filling construction 24 hours later after the sticking and use the rubber joint filling spatula to press the joint mixture into the facing crevice in 45°angle. You shall stir it frequently to achieve the maximum operability. After the initial set and drying, you shall clean the tile face with soaked clean sponge.</p>







Dry hanging construction steps and matters needing attention

	
Step One: Cutting and processing of aluminum profiles	Cut and prepare all aluminum parts according to the design drawings.
Step Two: Assembly of aluminum auxiliary frame and reinforcement	Use joint corner braces and rivets (or self-tapping screws) to connect and fix the prepared aluminum parts and assemble them into a complete aluminum frame.
Step Three: Cleaning of the aluminum auxiliary frame	Use a piece of soft cloth and cleanser to clean the adhesive applying positions on the aluminum auxiliary frame and it is required that it is free from any dust and grease that can affect the attachment.
Step Four: Attachment of double faced sticker	For the convenience of controlling the positions of the structural adhesive and the sectional dimensions, the aluminum auxiliary frame should be attached with double faced sticker in advance.
Step Five: Cleaning of the thin plate	Use a piece of soft cloth and cleanser to clean the adhesive applying positions on the back of the thin plate and it is required that the thin plate is free from any dust and grease that can affect the attachment.
Step Six: Assembly of the thin plate and aluminum frame	Attach the assembled aluminum frame onto the back of the thin plate with adhesive.
Step Seven: Filling of silicone structural adhesive	The filling of silicone structural adhesive should be dense, uniform and free from bubbles and the surface should be smooth and flat.
Step Eight: Attachment of glass-fiber back netplate	Use epoxy resin adhesive to attach the glass-fiber back net.
Step Nine: Storage and maintenance	Choose flat floor laid with wood blocks of uniform thickness for storing the thin plates in a room with the temperature of 20℃ and the humidity of 50%. The thin plates should not be moved before the structural adhesive is solidified and has reached sufficient load capacity. Generally, it reaches initial solidification in 24 hours and complete solidification in 7 days.

Dry hanging construction steps and matters needing attention

	
Step One: Spring wire scaling	Use equipment and instrument for spring wire scaling according to the drawings.
Step Two: Installation of the keel for the curtain wall	It should be guaranteed that the installation of the keel for the curtain wall should be stable and firm and the smoothness should meet the national standard and the design requirement.
Step Three: Installation of thin plates	Confirm the level and vertical control lines and install from top to bottom. Two persons work together to move the thin plates to the installation positions and use self-tapping screws and hand drills to fix the plates onto the keel and at the same time, adjust the smoothness and flatness.
Step Four: Filling of foam bars and sealing with silicone adhesive	Clean the seams between the plates and keep the seams dry. Attach the masking paper and fill with foam bars. The distance between the top of foam bars and the finished surface of the panels should be 4~6mm. Having finished filling the foam bars, fill with silicone sealing adhesive
Step Five: Surface cleaning	Clean the panels in time and prevent scratching on the surface.

Technical parameters of test report

Technical features		Inspection Standard	Requirements	Results
	Length		$\pm 0.6\%$	$-0.04\% \sim +0.02\%$
			$\pm 2.0\text{mm}$	$-0.50\text{mm} \sim +0.25\text{mm}$
	Width		$\pm 0.6\%$	$+0.02\%$
			$\pm 2.0\text{mm}$	$+0.14\text{mm} \sim +0.16\text{mm}$
	Thickness		$\pm 5\%$	$-0.25\% \sim +1.00\%$
			$\pm 0.5\text{mm}$	$-0.02\text{mm} \sim +0.08\text{mm}$
	Water absorption(%)		Average: $E_b \leq 0.5$	Average: 0.06
			Individual: $E_b \leq 0.6$	Individual maximum: 0.06
	Breaking strength(N)		Thickness $\geq 7.5\text{mm}$, ≥ 1300	Average: 1572
			Thickness $< 7.5\text{mm}$, ≥ 700	Average: 809
	Modulus of rupture(Mpa)		Average: ≥ 35	Average: 44
			Individual: ≥ 32	Individual minimum: 42
	Forst resistance		No crack, crazing or peeling after test	No crack, crazing and peeling
	Resistance to staining		Minimum Class 3	Class 5
	Resistance to chemicals(Class)	low concentrations acids & alkalis	GLA, GLB, GLC	GLA
		high concentrations acids & alkalis	GHA, GHB, GHC	GHA
		household chemicals and swimming pool salts	Minimum GB	GA